



SHARP INTERPACK
Packaging for Success

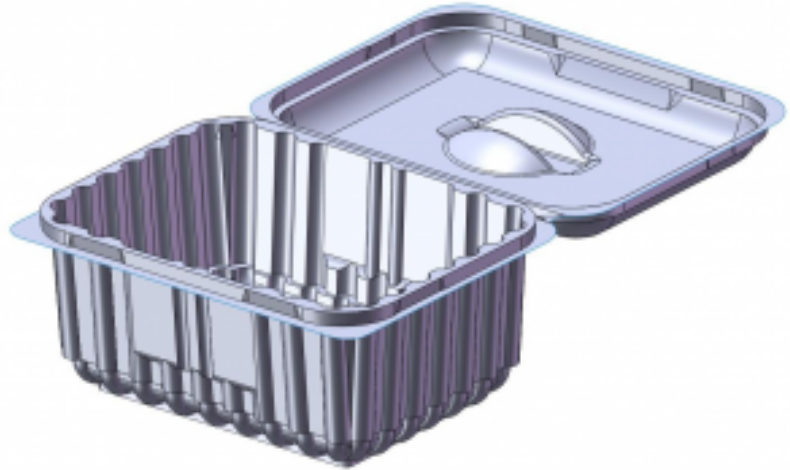
ARTICLE SPECIFICATION

Description:

SEMI-DEEP TUB

Our Product Code:

36329-502



Dimensions

Length	(+/- 1mm)	174.0
Width	(+/- 1mm)	278.0
Depth	(+/- 1mm)	91.0

Materials

Material Type	R-APET
Material colour	Clear

This document is valid on the day of issue.
Please refer to Sharp Interpack for any updated information

Sharp Interpack Ltd - Europe

Siliciumweg 3, 3812 SV Amersfoort, Holland

Telephone: 0031 (0) 33465 6262

Email: sales@sharpinterpack.com Website: www.sharpinterpack.com

Sharp Interpack Ltd - Aylesham, UK

Aylesham, Kent. CT3 3EF

Telephone: 01304 840581 Fax: 01304 841022

Email: sales@sharpinterpack.com Website: www.sharpinterpack.com

The above product is suitable for contact with all categories of foodstuffs. It complies with the following E.C. Directives: 90/128/EC and 2002/72/EC in terms of compositional limits and overall and specific migration limits, 94/62/EC and 99/177/EC and also the Packaging (Essential Requirements) Regulations 2003 in terms of concentration levels of heavy metal elements and 2004/12/EC in terms of recycling and recovery of packaging waste.

